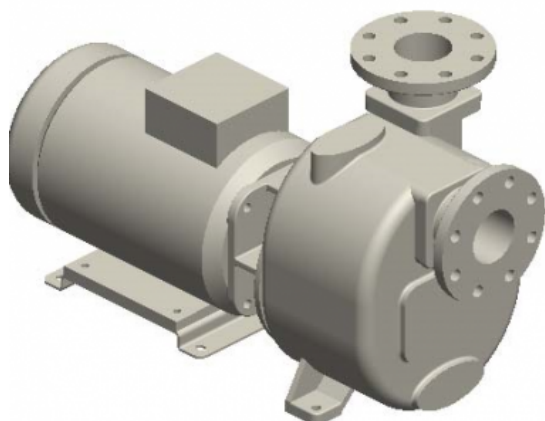




S 88 G31T+F+PS



Product codes:

Reference: 13471.03

Product short description:

3" Self-priming centrifugal pump in cast iron with mechanical seal, grease-lubricated, non return valve and 15 kW electric motor close coupled
+F flange coupling according DIN. PN16
+PS automatic lubricator for mechanical seal

Product features:

Main Features
Pump series: S 88
Pump Flow Rate: max 95 m ³ /h (1580 l/min)
Pump head with 50 Hz grid frequency: max 50 m
Max. Solids Handling: 35 mm
Self-priming: ★★★★★
Heavy-duty: ★★★☆☆
Construction: Close Coupled
Pump
Type of Pump: Self-priming centrifugal pump
Suction port: DN80
Discharge port: DN80
Type of ports: DIN PN16 flange (compatible), ANSI 150lb flange
Type of self-priming: Wet-prime



Filling port: Yes
Drain Port: Yes
Plug for Vacumeter: Yes
Plug for the Manometer: Yes
Material of casing: Cast iron
Material of impeller: Ductile Cast-iron
Material of wear plate: Steel
Material of shaft: Stainless steel AISI420
Material of non-return valve: NBR (Nitrile)
Shaft sealing: YCV Mechanical Seal with Grease Lubrication in SiC/SiO ₂ /FKM (Viton®) on Stainless Steel Sleeve
Drive
Type of drive unit: Three-Phase Electric Motor
Efficiency class: IE1, S6-75%
Rated Power: 15 kW (20 HP)
Maximal Rotation: 2900 rpm (50 Hz)
Rated voltage: 400 V ±10% @ 50 Hz, 690 V ±10% @ 50 Hz
Protection: 32 Amp (380-480 V), 19 Amp (660-725 V)
Cooling method: IC411- TEFC
Protection degree: IP55
Insulation class: F
Performance data
Typical application: waste water with solids in suspension, non-corrosive
Product temperature: max. 60 °C
Ambient temperature: max. 40 °C
Density: up to 1, 1 kg/dm ³ , for higher values you need an oversized motor
Viscosity: up to 5 mm ² s (cSt), for higher values you need an oversized motor
Max vacuum with water: max 8 m (9, 5 m for 10 min)
Max vacuum with air: max 8, 5 m
Additional Features
Setup position: Horizontal
Coupling: One shaft solution without any coupling
Paint: RAL6011 Reseda green
External Dimensions (L x W x H): 819 x 367 x 468 mm
Net Weight: 140 kg

Product gallery:

