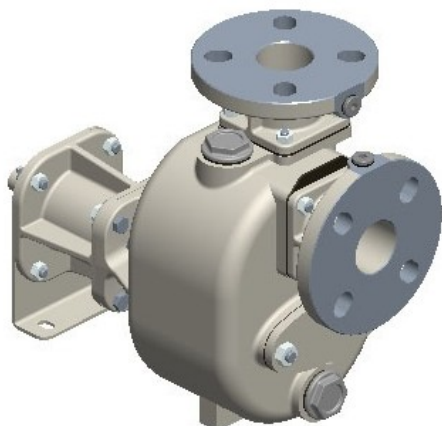




S 40 G31B+F



**Product codes:**

Reference: 1788.02

**Product short description:**

1½" Self-priming centrifugal pump in cast iron with mechanical seal, grease-lubricated, non return valve, pedestal and bare shaft.

**+F flange coupling according DIN. PN16**

**Product features:**

Main Features
Pump series: S 40
Pump Flow Rate: max 22 m³/h (360 l/min)
Pump head with 50 Hz grid frequency: max 15 m
Max. Solids Handling: 20 mm
Self-priming: ★★☆☆☆
Heavy-duty: ★★★★★
Construction: Bare shaft
Pump
Type of Pump: Self-priming centrifugal pump
Pump manufacturer: Victor Pumps
Suction port: DN40
Discharge port: DN40
Type of ports: DIN PN16 flange (compatible), ANSI 150lb flange
Type of self-priming: Wet-prime
Inspection cover for the impeller: Yes



<b>Filling port:</b> Yes
<b>Drain Port:</b> Yes
<b>Plug for Vacuometer:</b> Option
<b>Plug for the Manometer:</b> Option
<b>Material of casing:</b> Cast iron
<b>Material of impeller:</b> Cast iron
<b>Material of wear plate:</b> Steel
<b>Material of shaft:</b> Stainless steel AISI316
<b>Material of non-return valve:</b> NBR (Nitrile)
<b>Shaft sealing:</b> YCV Mechanical Seal with Grease Lubrication in SiC/SiO <sub>2</sub> /FKM (Viton®) on Stainless Steel Sleeve
<b>Drive</b>
<b>Type of drive unit:</b> Without drive
<b>Rated Power:</b> 1, 1 kW
<b>Maximal Rotation:</b> 2900 rpm (50 Hz)
<b>Performance data</b>
<b>Typical application:</b> waste water with solids in suspension, non-corrosive
<b>Product temperature:</b> max. 90 °C
<b>Ambient temperature:</b> max. 40 °C
<b>Density:</b> up to 1, 1 kg/dm <sup>3</sup> , for higher values you need an oversized motor
<b>Viscosity:</b> up to 30 mm <sup>2</sup> s (cSt), for higher values you need an oversized motor
<b>Max vacuum with water:</b> max 8 m (9, 5 m for 10 min)
<b>Max vacuum with air:</b> max 6 m
<b>Additional Features</b>
<b>Setup position:</b> Horizontal
<b>Coupling:</b> Without
<b>Arrangement:</b> None
<b>Paint:</b> RAL6011 Reseda green
<b>External Dimensions (L x W x H):</b> see dimensions
<b>Net Weight:</b> see dimensions

## Product gallery:

