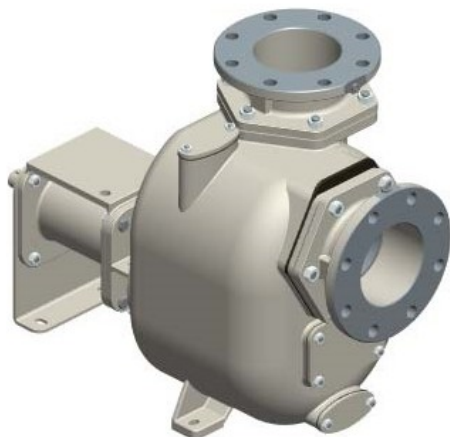




S150 G31B+F+PS



Product codes:

Reference: 3458.03

Product short description:

6" Self-priming centrifugal pump in cast iron with mechanical seal, grease-lubricated, non return valve, pedestal and bare shaft.

+F flange coupling according DIN. PN16

+PS automatic lubricator for mechanical seal

Product features:

Main Features
Pump series: S150
Pump Flow Rate: max 260 m ³ /h (4300 l/min)
Pump head with 50 Hz grid frequency: max 13 m
Max. Solids Handling: 72x50 mm
Self-priming: ★★☆☆☆
Heavy-duty: ★★★★★
Construction: Bare shaft
Pump
Type of Pump: Self-priming centrifugal pump
Suction port: DN150
Discharge port: DN150
Type of ports: DIN PN16 flange (compatible), ANSI 150lb flange
Inspection cover for the impeller: Yes



Drain Port: Yes
Plug for Vacuometer: Option
Plug for the Manometer: Option
Material of casing: Cast iron
Material of impeller: Ductile Cast-iron
Material of wear plate: Steel
Material of shaft: Stainless steel AISI420
Material of non-return valve: NBR (Nitrile)
Shaft sealing: YCV Mechanical Seal with Grease Lubrication in SiC/SiO ₂ /FKM (Viton®) on Stainless Steel Sleeve
Drive
Type of drive unit: Without drive
Rated Power: 11 kW
Maximal Rotation: 1450 rpm (50 Hz)
Performance data
Typical application: waste water with solids in suspension, non-corrosive
Product temperature: max. 90 °C
Ambient temperature: max. 40 °C
Density: up to 1, 4 kg/dm ³ , for higher values you need an oversized motor
Viscosity: up to 30 mm ² s (cSt), for higher values you need an oversized motor
Max vacuum with water: max 8 m (9, 5 m for 10 min)
Max vacuum with air: max 6 m
Additional Features
Setup position: Horizontal
Coupling: Without
Arrangement: None
Paint: RAL6011 Reseda green
External Dimensions (L x W x H): see dimensions
Net Weight: see dimensions

Product gallery:

