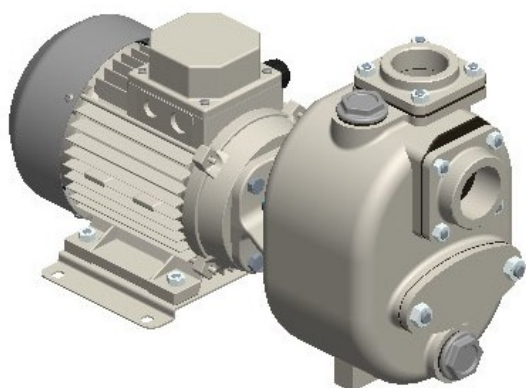




S 40 G31M+PS



Product codes:

Reference: 11091.01

Product short description:

1½" Self-priming centrifugal pump in cast iron with mechanical seal, grease-lubricated, non return valve on carrying frame for 1 person assembled with a 1,1 kW single-phase electric motor+**PS automatic lubricator for mechanical seal**

Product features:

Main Features
Pump series: S 40
Pump Flow Rate: max 22 m³/h (360 l/min)
Pump head: max 15 m
Max. Solids Handling: 20 mm
Self-priming: ★★★☆☆
Heavy-duty: ★★★★★
Construction: Close Coupled
Pump
Type of Pump: Self-priming centrifugal pump
Suction port: 1½"
Discharge port: 1½"
Type of ports: Female Thread BSP
Type of self-priming: Wet-prime



Vaccum pump: No
Inspection cover for the impeller: Yes
Filling port: Yes
Drain Port: Yes
Plug for Vacumeter: No
Plug for the Manometer: No
Material of casing: Cast iron
Material of impeller: Cast iron
Material of wear plate: Steel
Material of shaft: Stainless steel AISI304
Material of non-return valve: NBR (Nitrile)
Shaft sealing: YCV Mechanical Seal with Grease Lubrication in SiC/SiO ₂ /FKM (Viton®) on Stainless Steel Sleeve
Drive
Type of drive unit: Single-phase electric motor
Drive Manufacturer: Victor Pumps
Rated Power: 1, 1 kW
Maximal Rotation: 2900 rpm (50 Hz)
Rated voltage: 230 V ±10% @ 50 Hz
Protection: 10, 5 Amp (220-240 V)
Protection degree: IP55
Insulation class: F
Performance data
Typical application: waste water with solids in suspension, non-corrosive
Product temperature: max. 60 °C
Ambient temperature: max. 40 °C
Density: up to 1, 1 kg/dm ³ , for higher values you need an oversized motor
Viscosity: up to 30 mm ² s (cSt), for higher values you need an oversized motor
Max vacuum with water: max 8 m (9, 5 m for 10 min)
Max vacuum with air: max 7, 5 m
Additional Features
Paint: RAL6011 Reseda green
External Dimensions (L x W x H): see dimensions
Net Weight: see dimensions

Product gallery:

