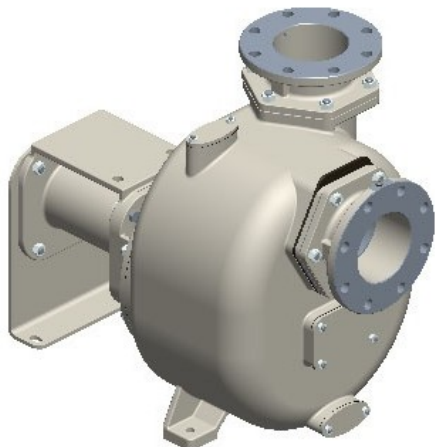




S180+50 G33B+F+PS



Product codes:

Reference: 35519.03

Product short description:

6" Self-priming centrifugal pump in cast iron with mechanical seal, grease-lubricated, non return valve, pedestal and bare shaft.

+F flange coupling according DIN. PN16

+PS automatischer Schmierstoffgeber für die Gleitringdichtung

Product features:

Main Features
Pump series: S180+50
Pump Flow Rate: max 340 m ³ /h (5667 l/min)
Pump head with 50 Hz grid frequency: max 20 m
Max. Solids Handling: 54 mm
Self-priming: ★★★★★
Heavy-duty: ★★★☆☆
Construction: Bare shaft
Pump
Type of Pump: Self-priming centrifugal pump
Suction port: DN150
Discharge port: DN150
Type of ports: DIN PN16 flange (compatible), ANSI 150lb flange
Inspection cover for the impeller: Yes



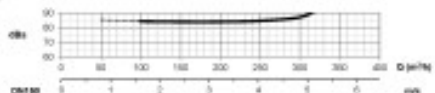
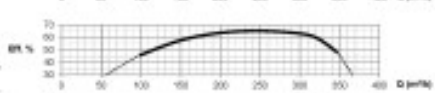
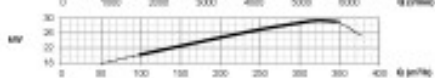
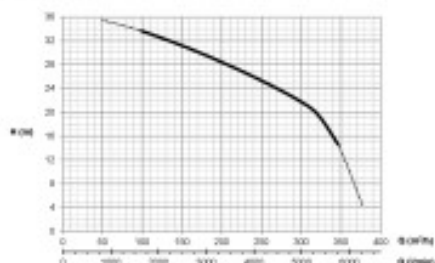
Drain Port: Yes
Plug for Vacuometer: Option
Plug for the Manometer: Option
Material of casing: Cast iron
Material of impeller: Ductile Cast-iron
Material of wear plate: Steel
Material of shaft: Stainless steel AISI420
Material of non-return valve: NBR (Nitrile)
Shaft sealing: YYV Mechanical Seal with Grease Lubrication in SiC/SiC/FKM(Viton®) on Stainless Steel Sleeve AISI316
Drive
Type of drive unit: Without drive
Rated Power: 30 kW
Maximal Rotation: 1450 rpm (50 Hz)
Performance data
Typical application: waste water with solids in suspension, non-corrosive
Product temperature: max. 90 °C
Ambient temperature: max. 40 °C
Density: up to 1, 1 kg/dm ³ , for higher values you need an oversized motor
Viscosity: up to 20 mm ² s (cSt), for higher values you need an oversized motor
Max vacuum with water: max 8 m (9, 5 m for 10 min)
Max vacuum with air: max 6 m
Additional Features
Setup position: Horizontal
Coupling: Without
Arrangement: None
Paint: RAL6011 Reseda green
External Dimensions (L x W x H): see dimensions
Net Weight: see dimensions

Product gallery:

S180+50 - 50 Hz

Feenstoffe bei
Stärke up to
Stärke 100 g

Umkehrung
Speed - 1450min./l
Verzögerung

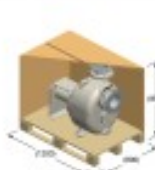


© 2004 Blackwell Publishing Ltd, *Journal of Internal Medicine* 255: 101–107

www.sagepub.com

Dimension: 100mm x 100mm x 100mm

www.elsevier.com/locate/ymbs


$$\begin{aligned} k_B &= 200 \\ \omega^2 &= 3.52 \end{aligned}$$


kg = 273

